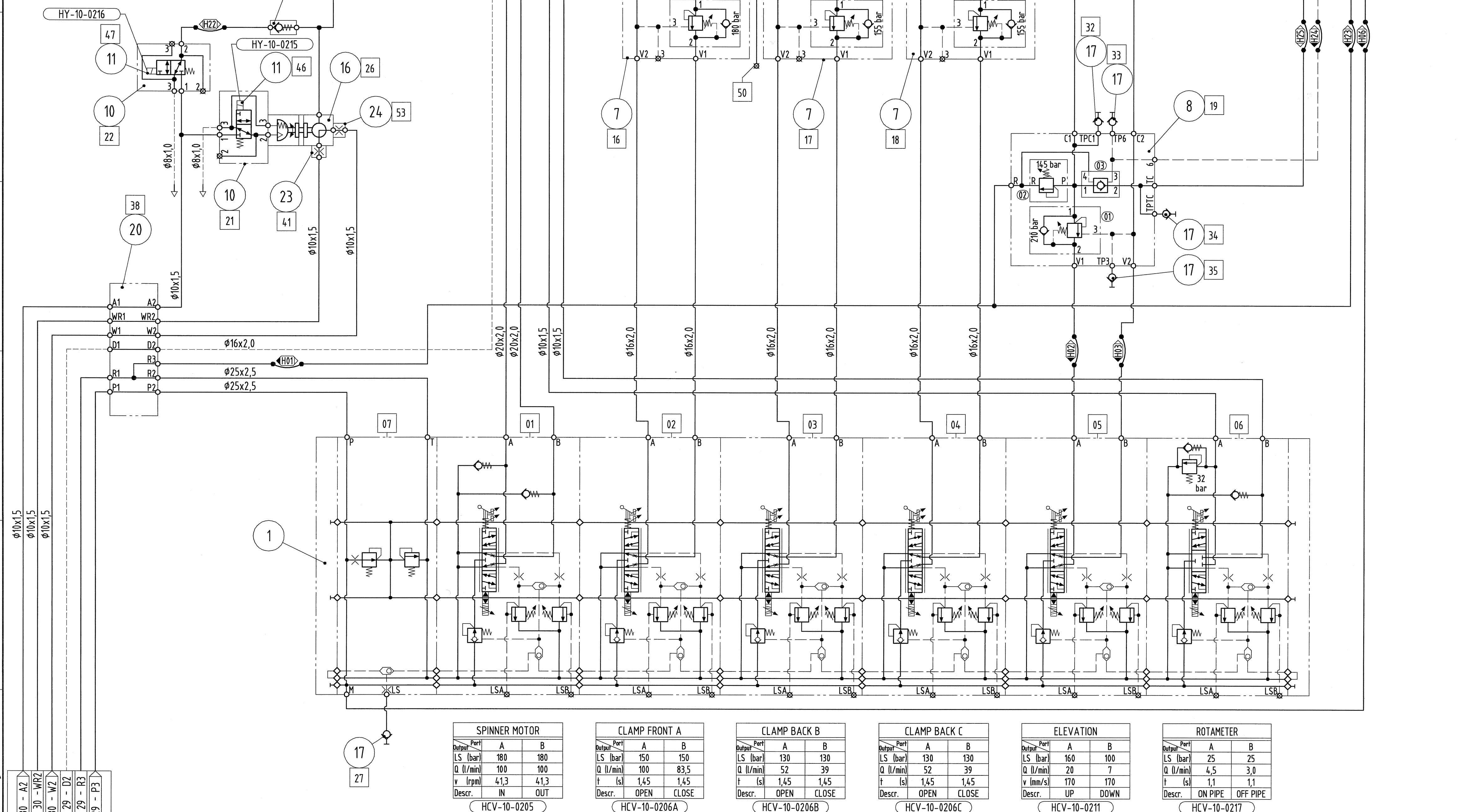


COMP. ID	FUNCTIONAL DESCRIPTION
01-06	MAIN CONTROL VALVE, SECTION 1-6
07	MAIN CONTROL VALVE, INLET/OUTLET
08	SPINNER ELEVATION
09	CLAMP FRONT A ACTUATOR
10	CLAMP BACK B ACTUATOR
11	CLAMP BACK C ACTUATOR
12	ROTAMETER ACTUATOR
13	SPINNER MOTOR, FRONT A
14	SPINNER MOTOR, BACK B
15	SPINNER MOTOR, BACK C
16	CLAMP HOLD/SHOCK VALVE FRONT A
17	CLAMP HOLD/SHOCK VALVE BACK B
18	CLAMP HOLD/SHOCK VALVE BACK C
19	LOAD CTRL./RELIEF/THREAD COMP. UNIT
20	THREAD COMP. ACT. IN/OUT SELECT VALVE
21	SPRINKLER ON/OFF(CIRC.) PILOT VLV.
22	SPRINKLER ANTI-FREEZE DRYER PILOT VLV.
23	THREAD COMP. FORCE LIMIT: "SPIN IN"
24	THREAD COMP. FORCE LIMIT: "SPIN OUT"
25	SPRINKLER DIRECTION CONTROL VLV.
26	SPRINKLER ON/OFF(CIRCULATION)
27	TEST POINT LS PRESSURE
28	TEST POINT THREAD COMP. "SPIN OUT"
29	
30	
31	
32	TEST POINT ELEVATION UP PRESSURE
33	TEST POINT THREAD COMP. "SPIN IN" PILOT
34	TEST POINT THREAD COMP. IN/OUT PRESSURE
35	TEST POINT SPINNER ELEVATION DOWN PRESS
36	SUB PLATE FOR THREAD COMP. STACK
37	SPINNER MOTOR DISTRIBUTION MANIFOLD
38	UTILITY LOOP SUPPORT MANIFOLD
39	
40	
41	SPRINKLER CIRCULATION FLOW LIMITER
42	CLAMP ON FRONT A PRESS. TRANSMITTER
43	CLAMP ON BACK B PRESS. TRANSMITTER
44	CLAMP ON BACK C PRESS. TRANSMITTER



COMP. ID	FUNCTIONAL DESCRIPTION
45	ROTAMETER COUNTER SWITCH
46	SPRINKLER ON/OFF(CIRC.) PILOT SOLENOID
47	SPRINKLER ANTI-FREEZE DRYER PILOT SOL.
48	CABLE AND PLUG FOR ROTAM. COUNT. SWITCH
49	SEAL RETAINER FOR "SPIN IN" FORCE LIM. VLV.
50	EMERGENCY OPEN FRONT ARM
51	BACK C - SPRINKLER NOZZLE
52	-
53	SPRINKLER PRESSURE REDUCTION THROTTLE
54	TRANSMITTER CONNECTOR, FEMALE
55	TRANSMITTER CONNECTOR, FEMALE
56	TRANSMITTER CONNECTOR, FEMALE
57	TRANSMITTER CONNECTOR
58	TRANSMITTER CONNECTOR
59	TRANSMITTER CONNECTOR
60	TOWARDS "ON PIPE" CREEP PREVENTER

This document and all information and data disclosed herein or herewith are the confidential and proprietary property of MARITIME HYDRAULICS and are not to be used, reproduced or disclosed in whole or in part by or to anyone without the written permission of MARITIME HYDRAULICS.				
THIS IS A COMPUTER AIDED DRAWING AND MUST NOT BE ALTERED MANUALLY				
Tolerances except as noted		Welding except as noted		
Rev.	Description of revision	Chk.	Appr.	Date / Sign.
0	ISSUED FOR CONSTRUCTION	KE	OH	07-FEB-07/KE

NOTE!

HYDRAULIC TUBE / PIPE / FITTING:

PROPERTIES ACC. TO MH STD. PIPING SPECIFICATION, SA17-0001, PIPING CLASS SHEET(S): ISO1 MH

TUBE / PIPE: DIMENSIONS ACC. TO FLOW DIAGRAM.

FITTING TYPE: ISO 8434-2 (SAE J514), WITHOUT SOFT SEAL IN FITTING NOSE (O-RING)

FLANGE TYPE: ISO 6162-1 & 2 (SAE J518C 61 & 62)

PRESSURE FLUID:

HYDRAULIC MINERAL OIL ISO HV TYPE (DIN HVL P)

PERMISSIBLE UPPER OPERATIONAL CONTAMINATION LIMIT: ISO 4406, CODE 16 / 13 (SAE AS4059, CLASS 7).

GRAPHICAL SYMBOLS:

HYDRAULIC & PNEUMATIC DIAGRAMS BASED ON ISO 1219.

ELECTRIC INSTRUMENTS BASED ON ISO 1219 AND IEC617

SPINNER MOTORS:

PORT "A" IS FARTHEST AWAY FROM THE SHAFT END OF MOTOR




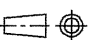
ID 23 & 24 PRESSURE SETTINGS:

THE PRESSURE SET POINTS ON THE SCHEMATIC ARE GUIDLINE VALUES ONLY.

FOR FINAL SET POINTS, SEE USER MANUAL MAINTENANCE CHAPTER.

ARROWHEAD: FLOW DIRECTION	COMPONENT ID-NO.	UTILISED PORT NAME
	NNNN-NNNA	= INT. ID-NOZZLE (INTERCONNECTION BY MH)
	NNNN-NNNA	= EXT. ID-NOZZLE (INTERCONNECTION BY OTHERS)

13	1818059	TORQUE MASTER, HOSE SCHEDULE FOR SHEET 07-10
12	1818058	TORQUE MASTER, HOSE SCHEDULE FOR SHEET 04-06
11	1818057	TORQUE MASTER, HOSE SCHEDULE FOR SHEET 01-03
10	1818056	TORQUE MASTER, TWL
09	1818055	TORQUE MASTER, CASING STABBING GUIDE
08	1818054	TORQUE MASTER, BACK-UP TONG
07	1818053	TORQUE MASTER, SPINNER
06	1818052	TORQUE MASTER, MAIN TONG CHUCK
05	1818051	TORQUE MASTER, MAIN TONG CHUCK CONTROL
04	1818050	TORQUE MASTER, MAIN TONG DRIVE
03	1818049	TORQUE MASTER, MAIN TONG DOLLY
02	1818048	TORQUE MASTER, MAIN FRAME
01	1818047	TORQUE MASTER, MANIFOLD IN DERRICK
SHEET NO. MH DRWG NO.		CONTENTS OF DRAWING

1	29	ORRIFICE 0,6		5041026	
3	28	DIRECT CONNECTION FOR PRESSURE		517877	
1	27	15M CABLE W/QUICK CONNECTOR		55126	
1	26	PROXIMITY SWITCH		55125	
3	25	PRESSURE TRANSMITTER		58109	
1	24	THROTTLE ADAPTER, G1/4, Ø 1.6		50575	
1	23	THROTTLE ADAPTER, G1/4, Ø 0,4		50571	
0	22	-	-	-	
1	21	WASHJET, SPRAY NOZZLE		51148	
1	20	MANIFOLD		5037418	
1	19	MANIFOLD		5026179	
1	18	MODULAR SUBPL. PAR., CETOP 03		36076	
9	17	TEST COUPLING W/BALL M16x2/G1		11993	
1	16	3/2 BALL VALVE W/SINGLE ACT.		55757	
1	15	CHECK VALVE		56032	
1	14	PRESSURE RED.VALVE		56029	
1	13	SEAL AND RETAINER FOR CETOP 03		56030	
1	12	SEQUENCE VALVE, CETOP 03		55751	
2	11	ATEX SOLENOID KL. EEX ME II T4		51548	
2	10	3/2 DIR. VALVE EL/SPRING		55838	
1	9	4/3 DIR. VALVE, EL.OPER., MARINE		48962	
1	8	LOAD CTRL. /LOAD DRAIN VALVE		55731	
3	7	LOAD HOLDING/ANTI SHOCK VALVE		55356	
3	6	HYDRAULIC MOTOR		54981	
1	5	HYDRAULIC CYLINDER		48621	
2	4	HYDR.CYLINDER W/POS. FEEDBACK		54979	
1	3	HYDR.CYLINDER W/POS. FEEDBACK		54978	
1	2	HYDR.CYLINDER W/POS. FEEDBACK		55540	
1	1	CONTROL VALVE BLOCK		57767	
Qty.	Item	Description	Drwg./Material		Unit weight Part number
Date	02-NOV-05	Drawn JHB	Traced KE	Scale NA	
Checked 	Approved 	Projection 			
HIGH EFFICIENCY JACK-UP B276 TORQUE MASTER, SPINNER HYDRAULIC FLOW DIAGRAM, SHEET 07					Replaces Replaced by
					Format A1 Drawing number UM 1818053 Rev. 0