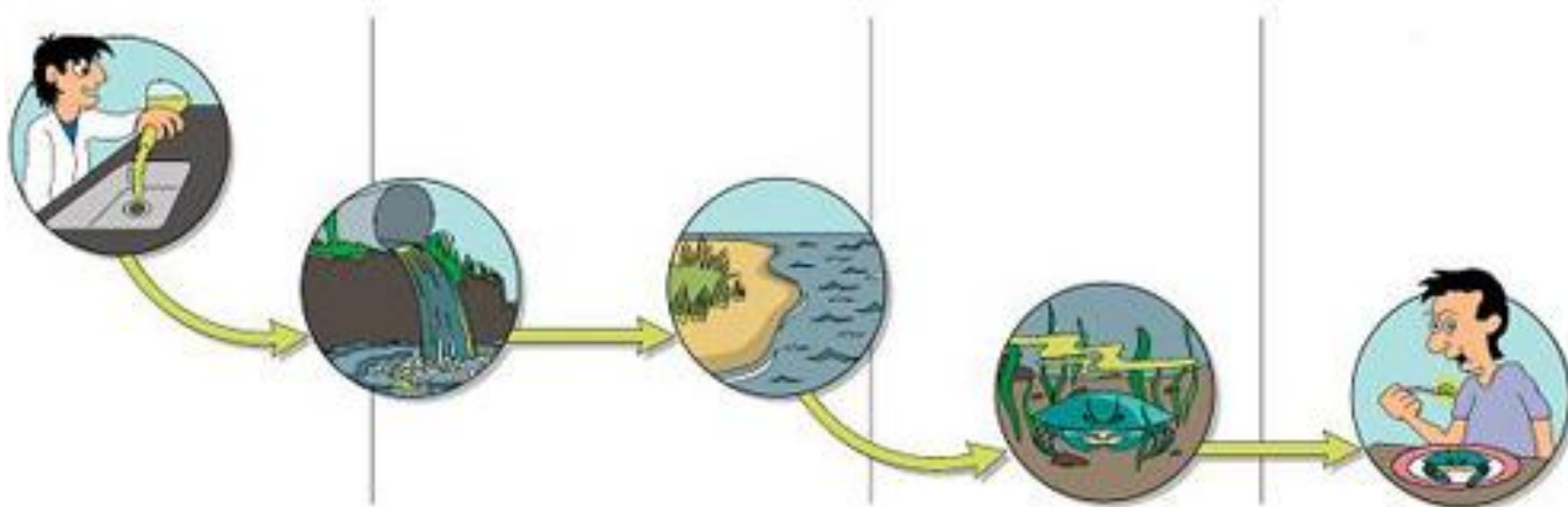




EMS – GRUNDPRINCIPPER FOR ENVIRONMENTAL MANAGEMENT



CONTROL ACTIVITIES - MINIMIZE ENVIRONMENTAL IMPACT

Management systems

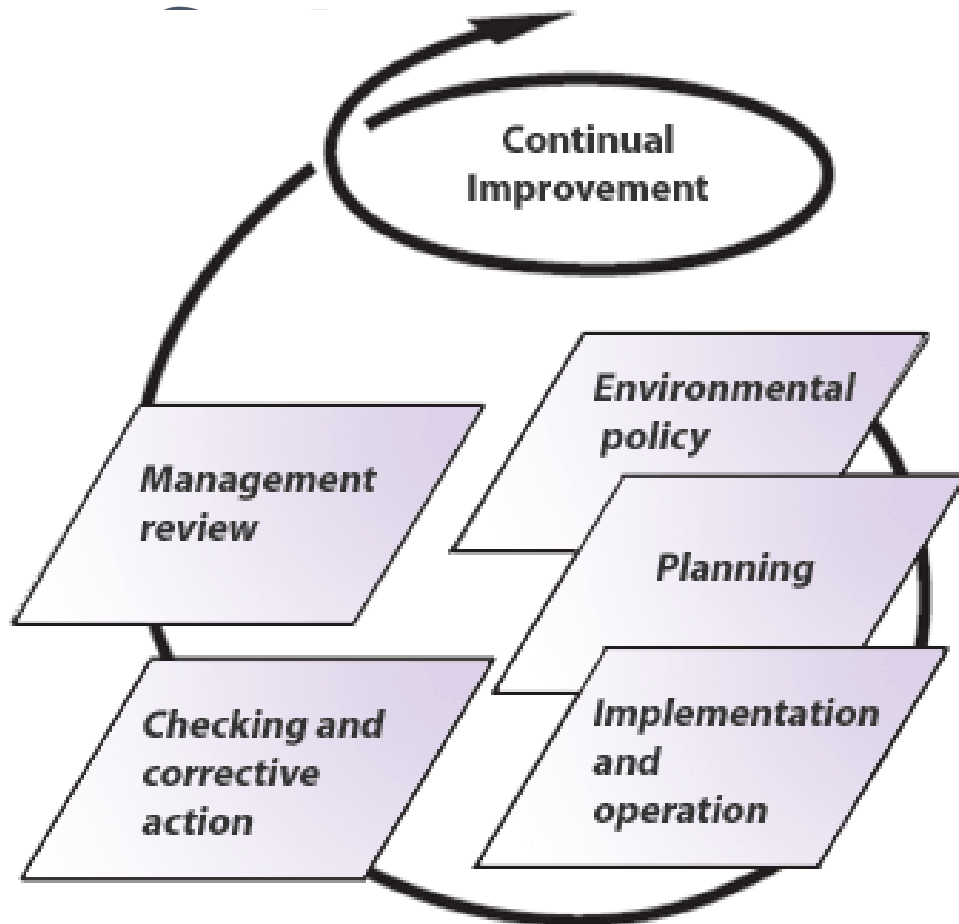


Forureneren betaler-princippet (PPP)

”Ifølge princippet om, at forureneren betaler skal en operatør, der forvolder miljøskade eller fremkalder overhængende fare for sådan skade, i princippet bære omkostningerne ved de nødvendige forebyggende eller afhjælpende foranstaltninger. Hvis en kompetent myndighed enten selv eller gennem en tredje mand træffer foranstaltninger i stedet for en operatør, bør myndigheden sikre, at de omkostninger, den afholder i denne forbindelse, dækkes af operatøren. Det er endvidere passende, at operatøren i sidste ende bærer omkostningerne ved vurderingen af miljøskader eller i givet fald ved vurdering af overhængende fare for at sådanne skader indtræder.”



Environmental Management



- plan what you're going to do,
- do what you planned to do,
- check to ensure that you did what you planned
- and act to make improvements

An Environmental Management System (EMS) is a structured framework for managing an organisation's significant environmental impacts;

- **Practical tool - To help organisations understand and manage their impacts on the Environment**
- **Framework - To continually improve environmental performance (managing negative impacts and helping to increase resource efficiency)**
- **Process – Through which organisations can engage with employees, customers, clients and other stakeholders (enhancing reputation ...helping demonstrate conformity with supply chain requirements)**

Stigende
ambitionsniv
eau



EMAS

ISO 14 001 miljøledelsessystem



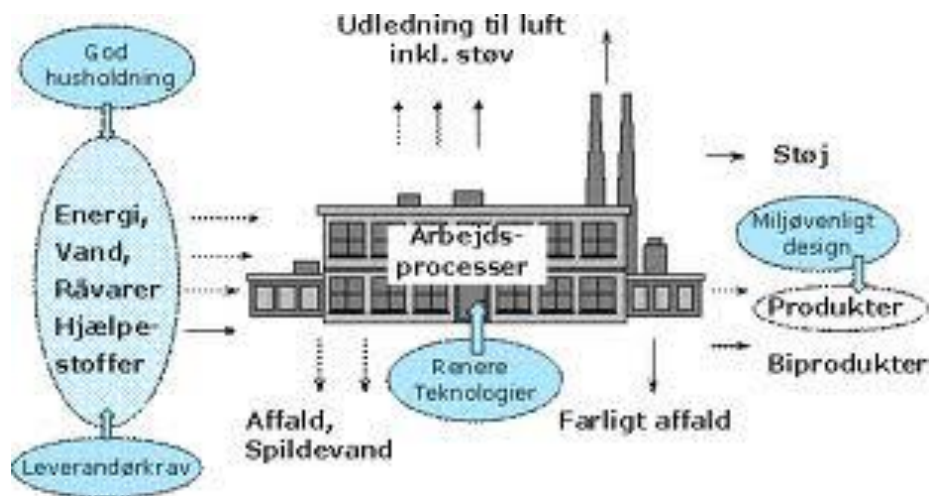
**Styring af udledninger til luft, vand og affald
(find inspiration i manualer som fx Key2Green,
Håndværksrådet)**



**God husholdning med
ressourceforbruget (energi, vand,
reduktion af spild og øget genanvendelse)**

Mål med miljøstyring

At sænke samlede miljøpåvirkning på en omkostnings effektiv måde.



Benefits of EMS

- **Helps achieve real cost savings - direct efficiencies in energy, water, waste, purchasing and transport**
- **Management of environmental risk and ensuring legal compliance**
- **A valuable engagement process for staff and stakeholders**
- **Effectively demonstrate commitment and responsibility to key clients, regulators and the public**
- **Leading schemes have been structured to be compatible and complementary with other mainstream standards (e.g. ISO 9001 Quality Standard)**
- **Increasingly valuable as a pre-requisite for doing business – EMS accredited certification helping to demonstrate your business's compliance with supply chain requirements**

Development of an environmental policy

ENVIRONMENTAL POLICY

POLICY OUTLINE

Wording Translation Solutions takes environmental causes seriously and takes an active part in sustainable development. We have established an environmental policy for our translators worldwide to follow. Our guidelines are published here so that they are aware of expected behaviour and so we can set the example for other companies to help reduce their impact on the world's resources.

Our measures cover three main areas:

- Recycling
- Travel policy
- Energy efficiency

OUR POLICY

We consider the wider environmental implications of our actions at all times:

- We aim at using energy efficiently
- We reduce the need for movement of both people and goods
- We promote environmental awareness amongst our translators
- We avoid unnecessary waste and encourage re-use, recycling and conservation

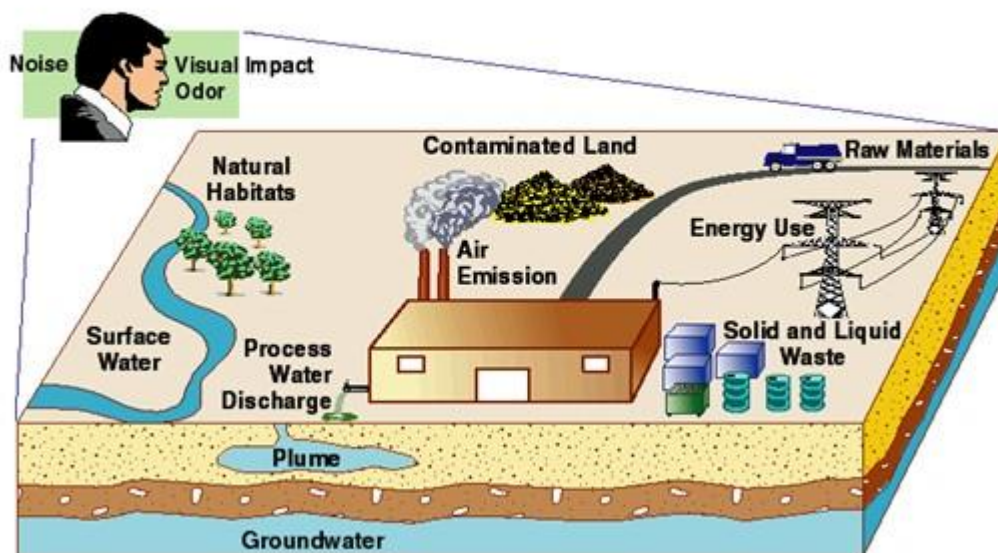
wording
translation solutions

W www.wordingsolutions.com
E info@wordingsolutions.com
Skype: wordingsolutions



Identification of environmental aspects and evaluation of associated environmental impact

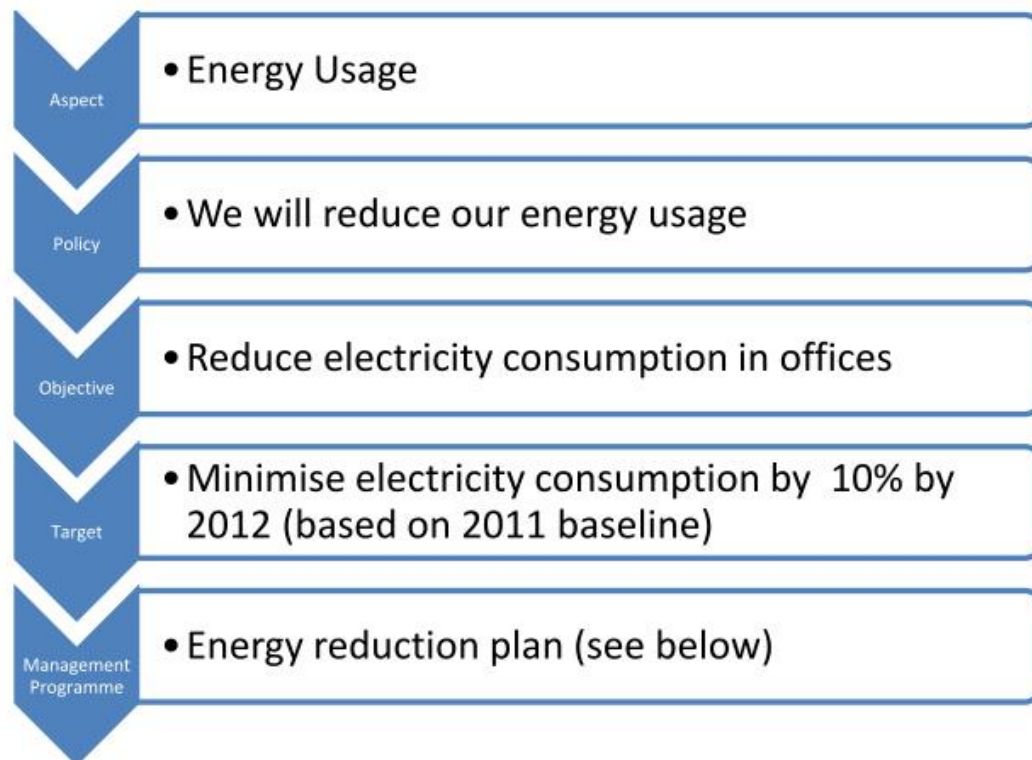
Aspects: Environmental Interactions



Establishment of relevant legal and regulatory requirement



Development and maintenance of environmental objectives and targets

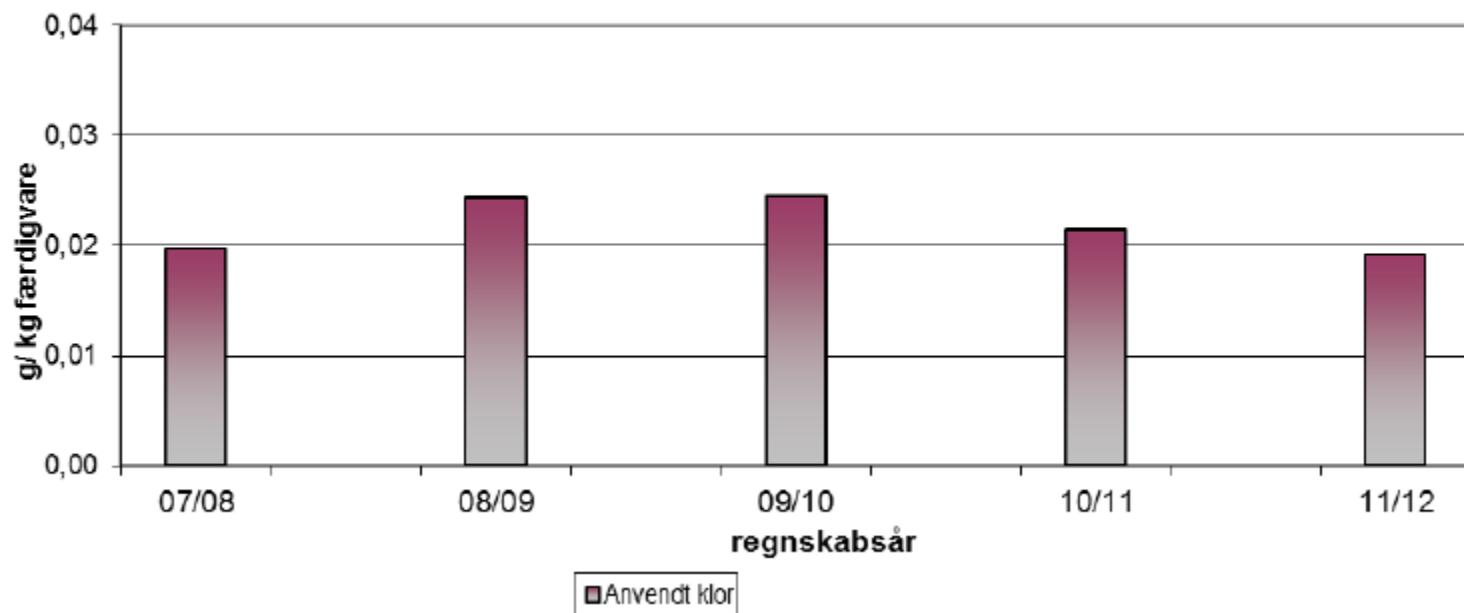


Implementation of a documented system, including elements of training, operational controls and dealing with emergencies



Monitoring and measurements of operational activities

Anvendt klor til desinfektion



Environmental internal auditing



Management reviews of the system to ensure its continuing effectiveness and suitability

